

For personal use only



Gaoual Bauxite Project Fast Track Drilling Program

LINDIAN
RESOURCES LTD.

Disclaimer

Forward Looking Statements

Some statements in this report regarding estimates or future events are forward looking statements. They include indications of, and guidance on, future earnings, cash flow, costs and financial performance. Forward looking statements include, but are not limited to, statements preceded by words such as “planned”, “expected”, “projected”, “estimated”, “may”, “scheduled”, “intends”, “anticipates”, “believes”, “potential”, “could”, “nominal”, “conceptual” and similar expressions. Forward looking statements, opinions and estimates included in this announcement are based on assumptions and contingencies which are subject to change without notice, as are statements about market and industry trends, which are based on interpretations of current market conditions. Forward looking statements are provided as a general guide only and should not be relied on as a guarantee of future performance. Forward looking statements may be affected by a range of variables that could cause actual results to differ from estimated results, and may cause the Company’s actual performance and financial results in future periods to materially differ from any projections of future performance or results expressed or implied by such forward looking statements. These risks and uncertainties include but are not limited to liabilities inherent in mine development and production, geological, mining and processing technical problems, the inability to obtain any additional mine licenses, permits and other regulatory approvals required in connection with mining and third party processing operations, competition for among other things, capital, acquisition of reserves, undeveloped lands and skilled personnel, incorrect assessments of the value of acquisitions, changes in commodity prices and exchange rate, currency and interest fluctuations, various events which could disrupt operations and/or the transportation of mineral products, including labour stoppages and severe weather conditions, the demand for and availability of transportation services, the ability to secure adequate financing and management’s ability to anticipate and manage the foregoing factors and risks. There can be no assurance that forward looking statements will prove to be correct.

Competent Person’s Statement

The information in this report that relates to exploration results is based on information compiled or reviewed by Mr Mark Gifford, an independent Geological expert consulting to Lindian Resources Limited. Mr Mark Gifford is a Fellow of the Australian Institute of Mining and Metallurgy and has sufficient experience which is relevant to the style of mineralisation and type of deposit under consideration and to the activity which he is undertaking to qualify as a Competent Person as defined in the December 2012 edition of the “Australasian Code for Reporting of Exploration Results, Mineral Resources and Ore Reserves” (JORC Code). Mr Gifford consents to the inclusion in the announcement of the matters based on his information in the form and context in which it appears”.

Gaoual Project

Refer to Lindian’s ASX Announcements dated 10 April and 8 May 2019 for full details of the option agreement and exploration results for the Gaoual Project.



Guinea’s next conglomerate bauxite discovery

Fast Track Phase 1 Drilling Program

- 1 Drilling in December '19
- 2 Initial indicative results December '19
- 3 Very Low-cost, total phase 1 drill program ~US\$150k
- 4 Scale, grade and depth of Conglomerate Bauxite defined



- ✓ Phase 1 drilling program will focus solely on the Bouba Plateau (the conglomerate bauxite)
- ✓ Average hole spacing approximately 600m
- ✓ Drilled with compact Landcruiser based auger drilling rig
- ✓ Maximum of 34 holes for phase 1 drilling program
- ✓ Site geologists will be equipped with handheld XRF sampling equipment, which previously has shown to correlate very accurately with the laboratory XRF analysis, providing real time indication of drilling success
- ✓ The low impact nature of the Phase 1 drilling program ensures that required permitting is minimal with this work scheduled to start in early October

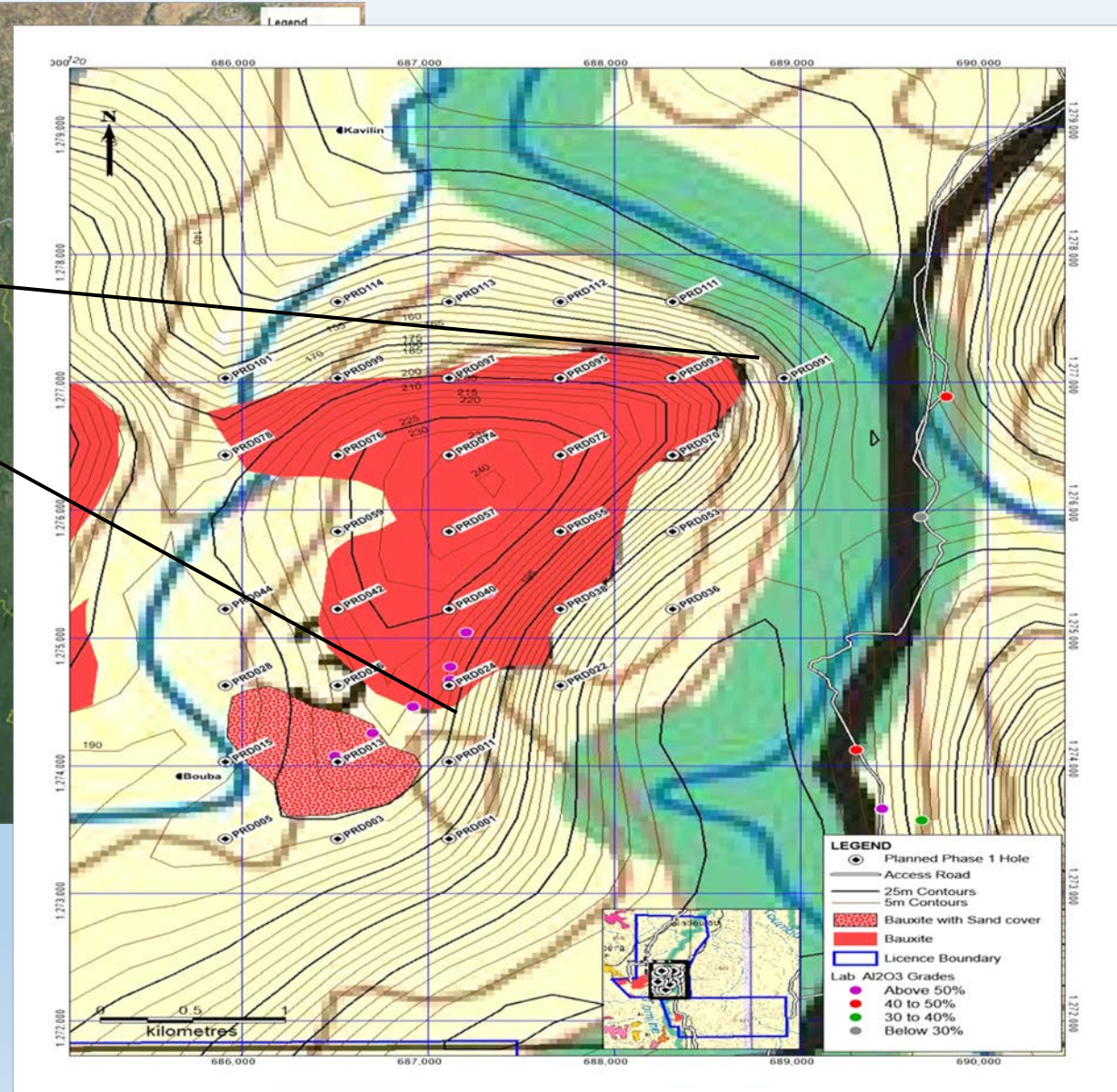
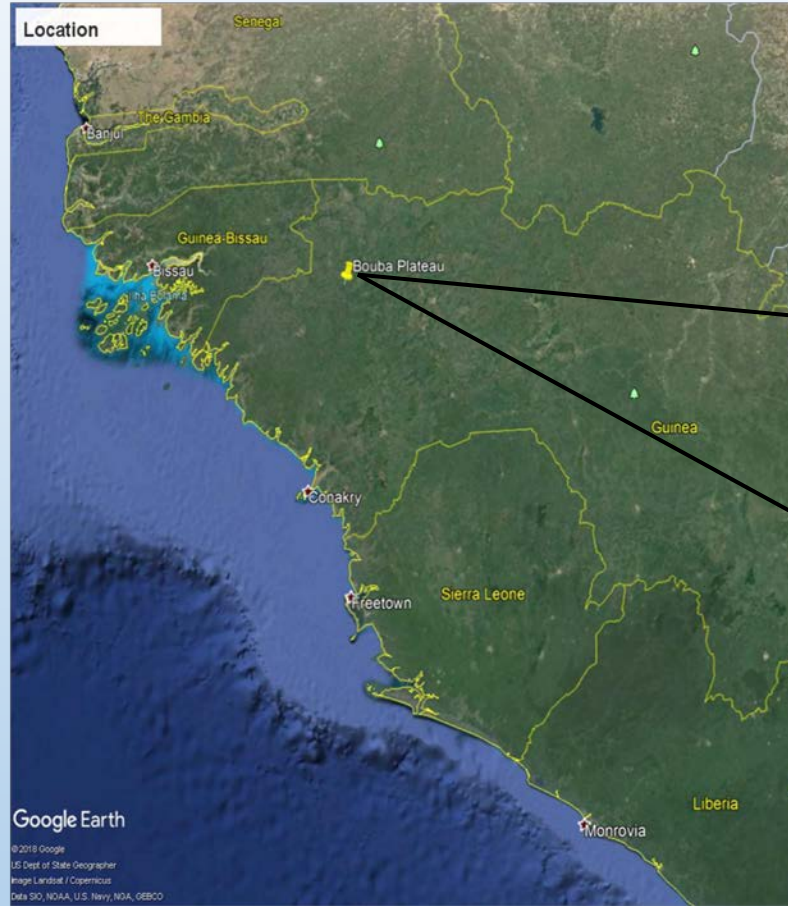


Guinea's next conglomerate bauxite discovery

Fast Track Phase 1 Drilling Program

For personal use only

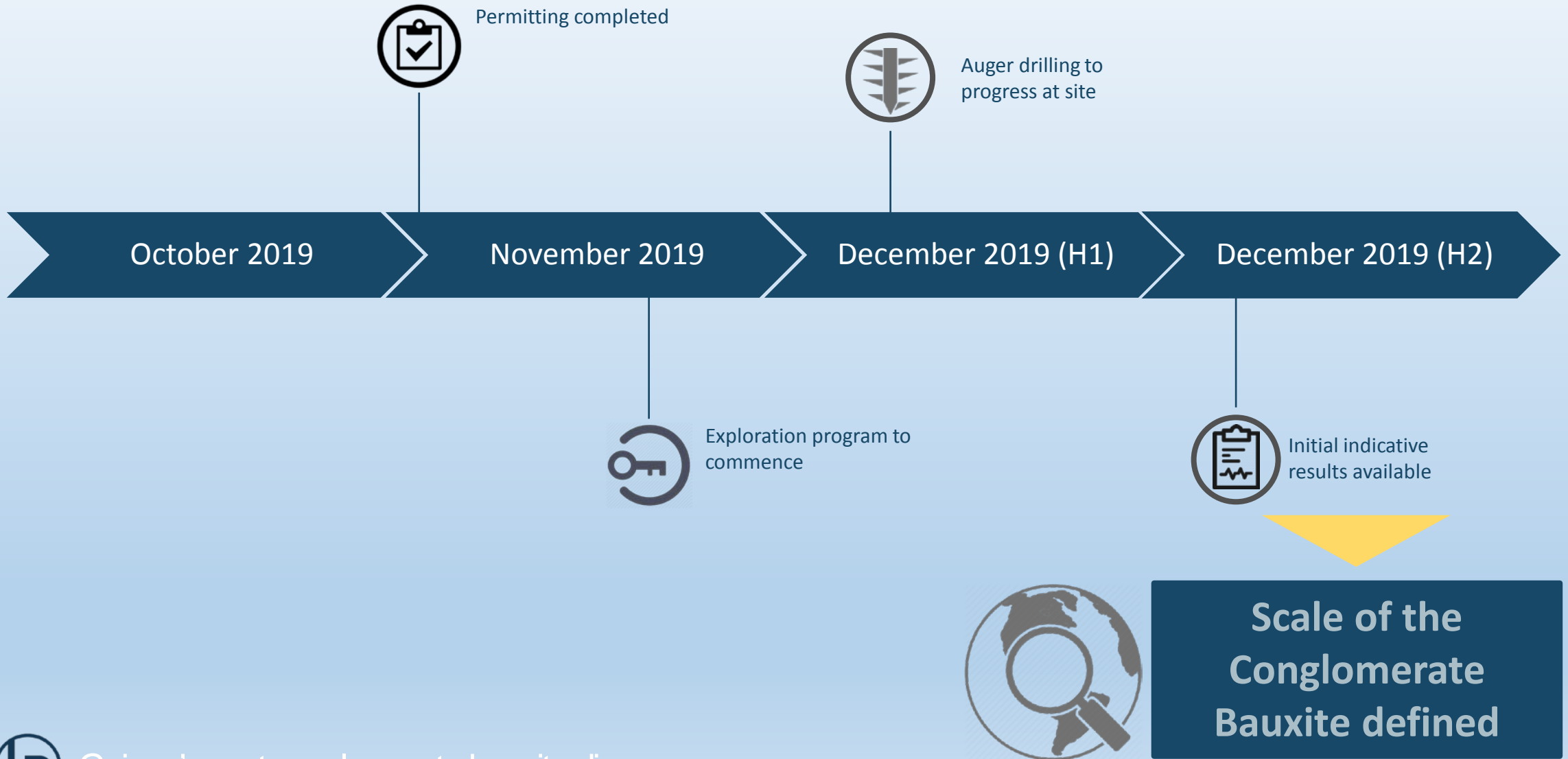
- ✓ Country and region location
- ✓ Guinea West Africa
- ✓ Gaoual project area located within the Boke corridor
- ✓ One of the best bauxite precincts in the world
- ✓ Bouba plateau drilling program



Guinea's next conglomerate bauxite discovery

Drill Program – Milestones to First Results

For personal use only



Guinea's next conglomerate bauxite discovery

Conglomerate Bauxite Defined – Let's Recap

Conglomerate Bauxite is best characterized as:

✓ *Very high Total Alumina grade (50-60% Al_2O_3)*

✓ *Very low boehmite present. What is the significance of this?
Significantly higher available/recovered Al_2O_3 than typical insitu bauxite*

✓ *Very low contaminants (Silica/Reactive Silica)*

✓ *Very deep bauxite profile, generally >30m vs. typical bauxite <15m*



Figure 1: Typical Insitu Bauxite



Figure 2: Bouba Plateau Conglomerate Bauxite

Conglomerate bauxite is also visually very distinctive and unique when compared to typical insitu bauxite

The above photos (**Figures 1 and 2**) demonstrate how stark the difference really is

It is this distinct visual difference that first alerted the geologists that the Bouba Plateau – which is located within the Gaoual project area could contain conglomerate bauxite



Guinea's next conglomerate bauxite discovery

Fast Track Phase 1 Drilling Program

- ✓ Program is fast - approximately 2 weeks drill time
- ✓ Low cost - approximately USD\$150k
- ✓ Real time initial indicative results available in December 2019
- ✓ Scale, grade and depth of Conglomerate Bauxite will be defined
- ✓ Phase 2 drilling program will be defined once Phase 1 results evaluated



Contact:

Managing Director:

Shannon Green

shannon@lindianresources.com.au

+61 400 597 562



© LINDIAN RESOURCES LTD.
www.lindianresources.com.au



For personal use only