



25 August 2009

The Manager  
Company Announcements Office  
ASX Ltd  
4th Floor, 20 Bridge Street  
SYDNEY, NSW 2000

Dear Sir

**BOARDROOM RADIO BROADCAST**

Lindian Resources Limited provides the opportunity to listen to an audio broadcast with Greg Smith, Managing Director in a presentation titled "Lindian Resources Limited – Dinguiraye Platinum, Nickel and Copper Project in Guinea".

To listen, simply click on the link below:

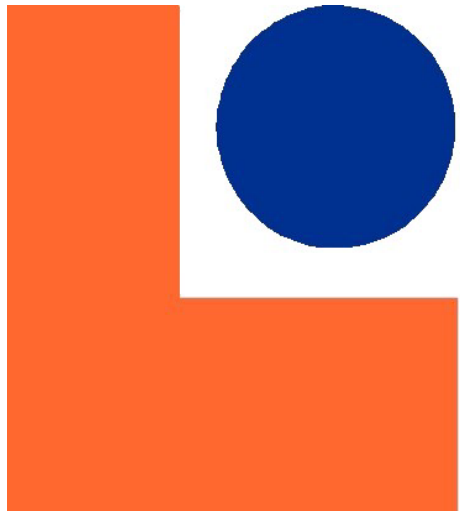
<http://www.brr.com.au/event/59574>

The presentation is attached for reference.

For further details contact Greg Smith on +61 8 9345 2478 or by email, [smithg@crpl.com.au](mailto:smithg@crpl.com.au).

Yours faithfully

Paul Jurman  
Company Secretary



**LINDIAN  
RESOURCES  
LIMITED**

***Dinguiraye Pt-Ni-Cu Project***

## **Disclaimer**

This presentation is provided to you for the sole purpose of providing preliminary background technical, financial and other information to enable a review of the business and activities of Lindian Resources Ltd. It does not constitute an invitation, solicitation or recommendation to purchase or subscribe for securities. The information in this presentation will be subject to completion, verification and amendment and should not be relied upon as a complete and accurate representation of any matters that a potential investor should consider in evaluating Lindian. This presentation may contain forward looking statements that are made in good faith and are believed to have reasonable basis. However, such statements are subject to risks, uncertainties and other factors which could cause the actual results to differ materially from future results expressed, projected or implied by forward looking statements.

## **Competent Person Statement**

Scientific or technical information in this presentation has been prepared under the supervision of Mr Greg Smith, a director of the Company and a member of the Australasian Institute of Mining and Metallurgy (AusIMM). Mr Smith has sufficient experience which is relevant to the style of mineralisation under consideration and to the activity which he is undertaking to qualify as a Competent Person as defined in the 2004 Edition of the “Australasian Code for Reporting of Exploration Results, Mineral Resources and Ore Reserves” (the JORC Code). Mr Smith consents to the inclusion in this report of the Information, in the form and context in which it appears.



# **Board of Directors**

**Reg Gillard – Chairman**

**Greg Smith – Managing Director**

**Patrick Flint – Director**

**Tony Cunningham – Director**

**Paul Jurman – Company Secretary**



# Corporate

**Shares on Issue: 38,828,022**

**Listed Options: 17,381,879 at 30 cents 31/12/2009 (LINO)**

**Listed Options: 12,609,341 at 15 cents 31/12/2011 (LINO A)**

**Unlisted Options: 4,695,000 between 20 & 30 cents expiring  
up to 1/07/2011**

**Cash on Hand: A\$1.5M as at 30 June 2009**

**ASX : LIN**

**Frankfurt : WKN A0LEHB**



# Dinguiraye Pt-Ni-Cu Project Project Location

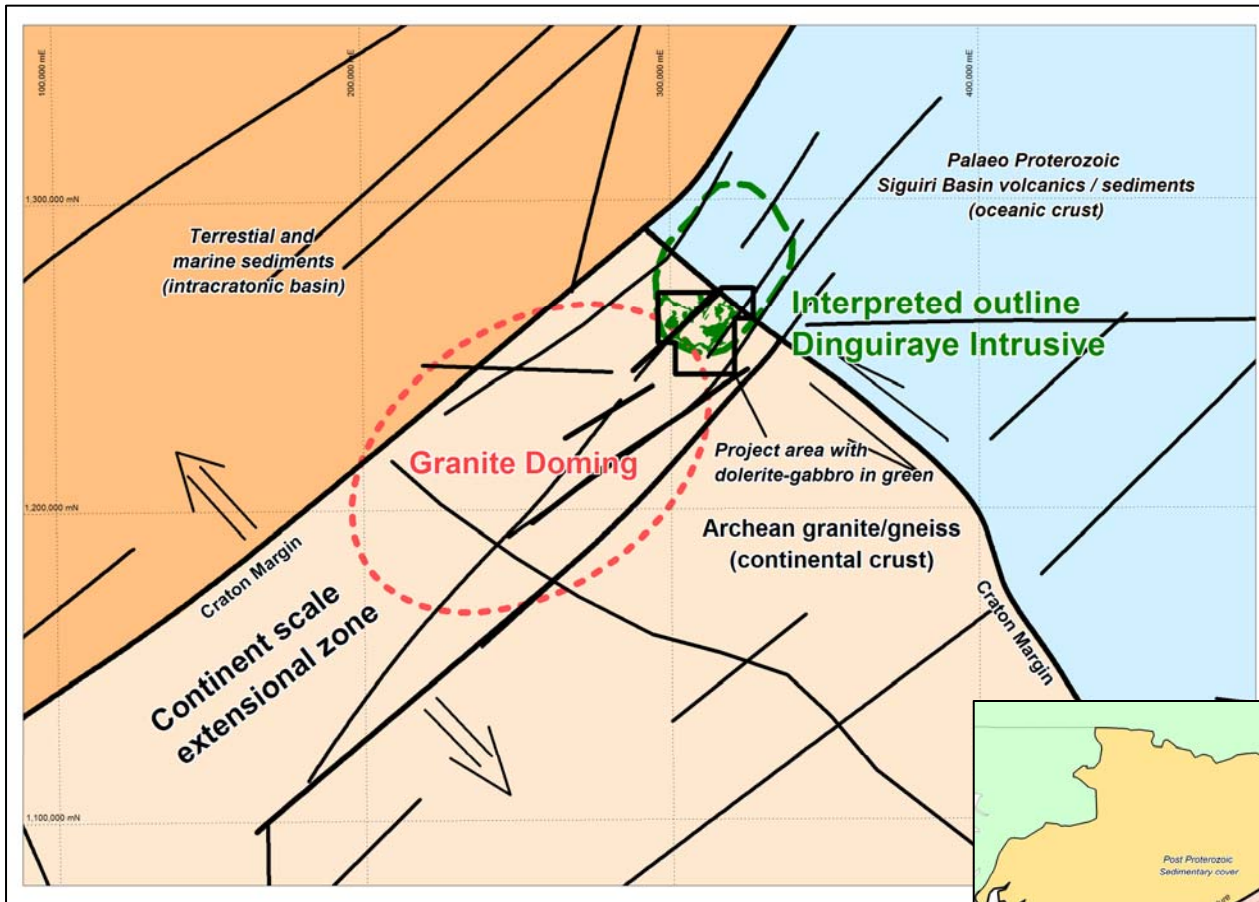


Located 400km from Conakry.

394km<sup>2</sup> exploration licence (4 permits) granted 18th March 2009. Applications covering a further 300km<sup>2</sup>.



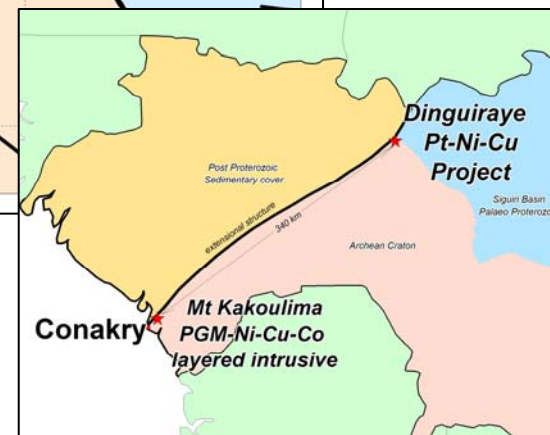
# Regional Geological - Structural Setting



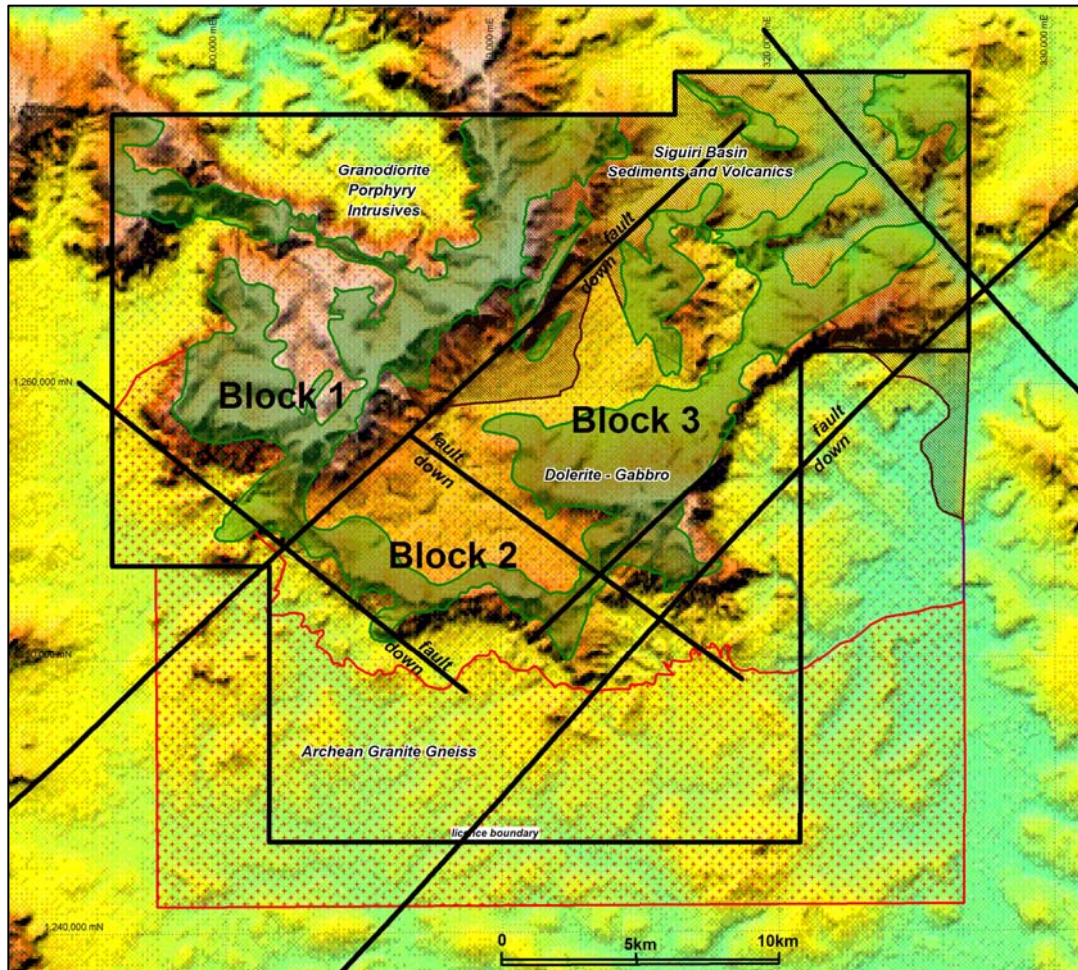
- Dinguiraye dolerite-gabbro intrusive interpreted areal extent 20km x 40km.

- Lies in continental scale crustal extensional zone at intersection with a faulted boundary between an Archean Craton and the Paleo Proterozoic Siguiri Basin.

- Similar to globally recognised PGM / Ni sulphide deposits.



# Local Geology / Structure



- Local geology interpreted from existing maps and sat image. Structure based on DTM derived from SRTM data.

- Interpretation fits regional setting. NE extensional tectonics producing block faulting and NW faults parallel to Craton / Siguri Basin contact.

- 3 fault bounded structural Blocks identified.

- Block 1 forms plateau at 800mRL. Blocks 2 and 3 at 700mRL.

- Plateaus capped by dolerite-gabbro intrusion measuring 14km x 20km in licence.

- Intruded between Archean granite-gneiss and overlying Siguri Basin sediments / volcanics (*potential sulphur source*).



# Exploration

- Initial reconnaissance rock chip sampling of laterite returned highly anomalous values including 3 samples with **Pt** results exceeding 100ppb up to a maximum of **292ppb**, **Ni** results to **293ppm** and **Cu** to **142ppm**.
- 2 phases of soil geochemistry have been completed with a total of **1684 samples** taken. Sampled on a 1,000m x 200m grid that has been infilled to 500m x 200m over anomalies.
- Highly anomalous soil results. Statistical thresholds using a +75 percentile were determined to be: **Pt 115ppb**, Pd 20ppb, Ni 190ppm, Cu 32 pm, Cr 2050ppm and Co 45ppm. Maximum values: **Pt 1039ppb**, Pd 69ppb, **Ni 1,932ppm**, Cu 129ppm **Cr 9275ppm** and Co 1068ppm.
- **Fugro** have completed **airborne magnetic survey**. Processed data has been presented to Resource Potentials for interpretation.
- **Drilling** planned for **October 2009**.



# Pt-Ni-Cr Soil Geochem over DTM

**Block 1:** Coincident Pt and Ni form 12,500m long x 1000m wide anomaly following fault bounded scarp face. Open to west and northeast.

Cr anomaly lies on plateau to north potentially related to rocks of ultramafic affinity.

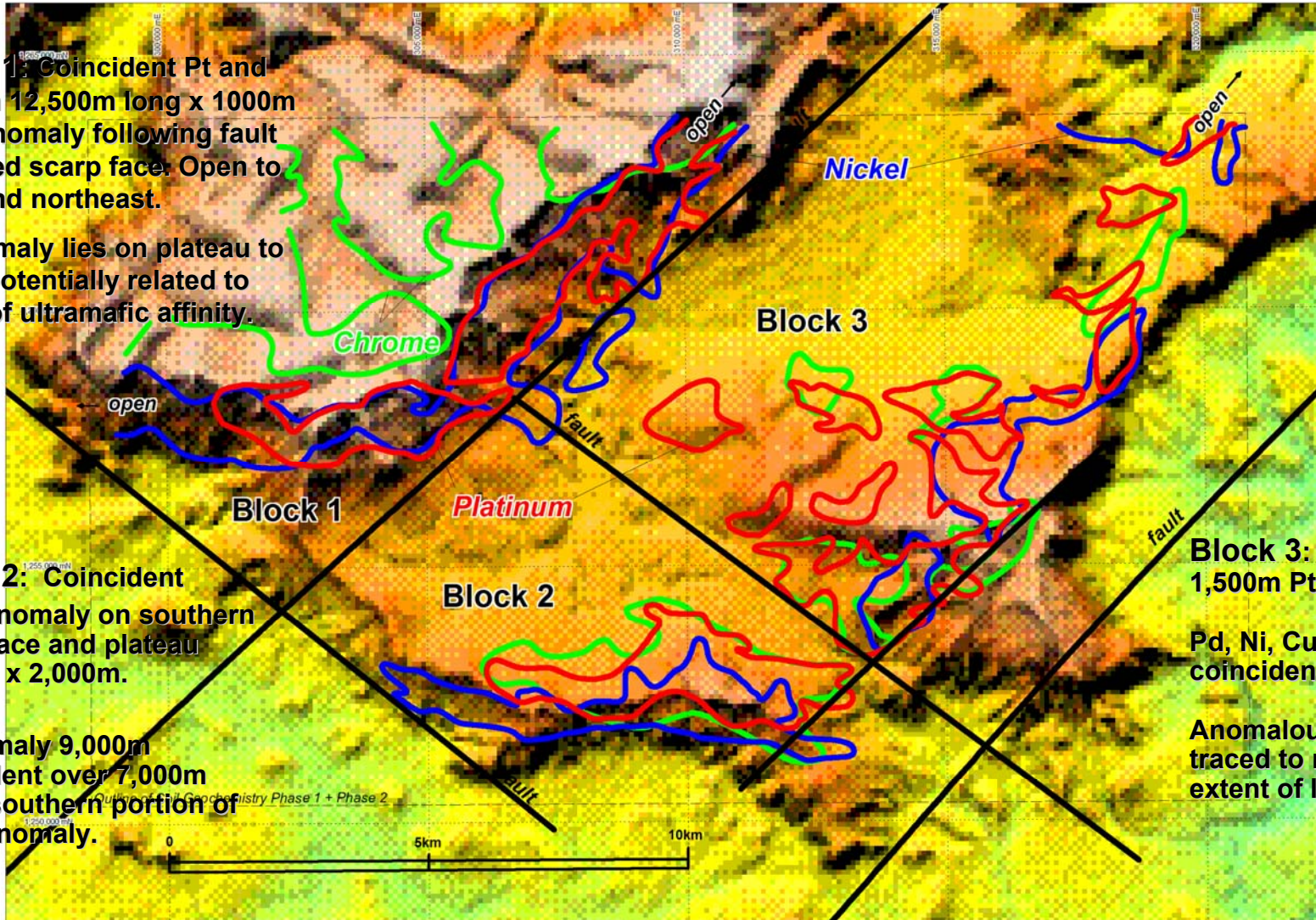
**Block 2:** Coincident Pt-Cr anomaly on southern scarp face and plateau 7,000m x 2,000m.

Ni anomaly 9,000m coincident over 7,000m along southern portion of Pt-Cr anomaly.

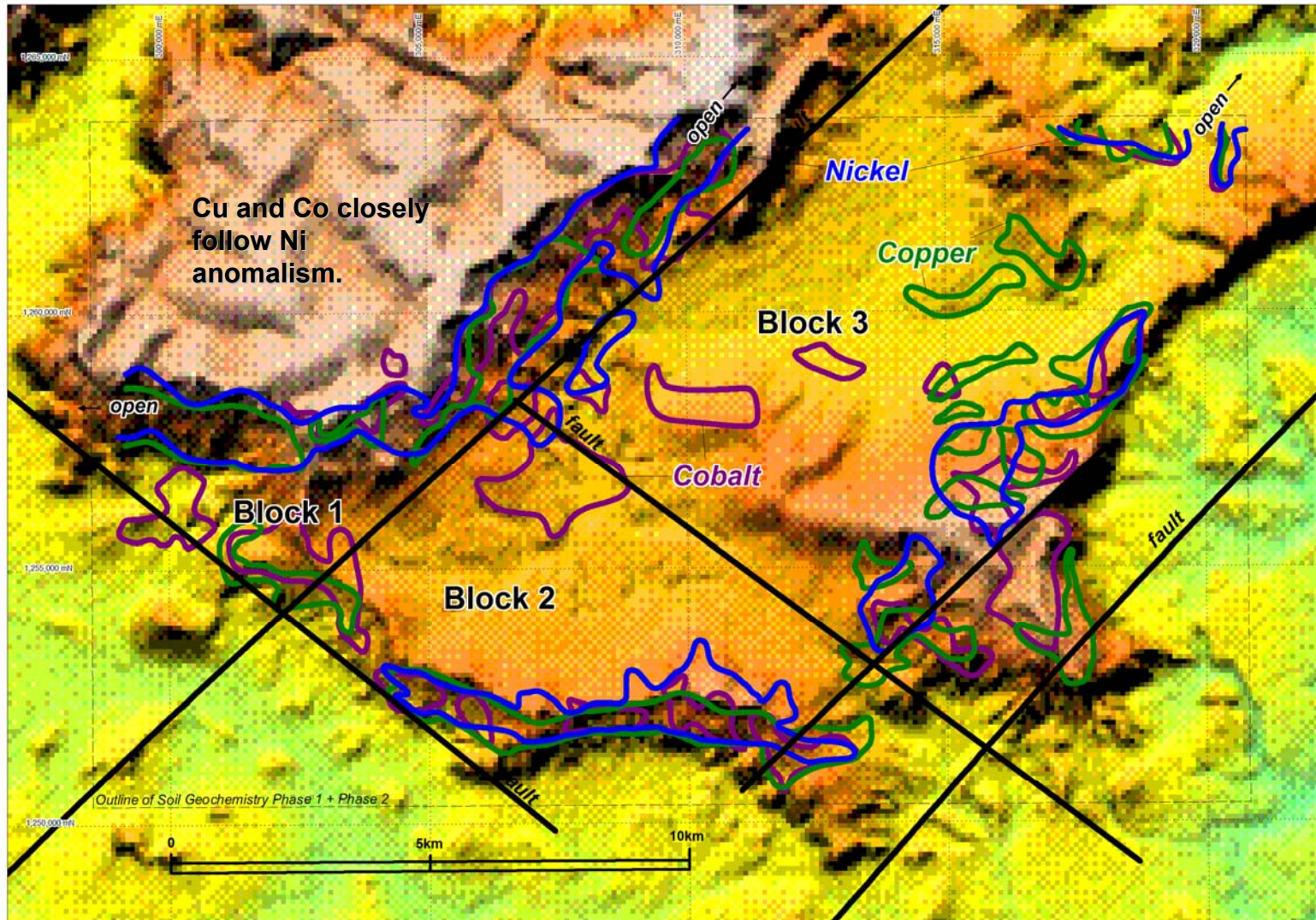
**Block 3:** 5,000m x 1,500m Pt anomaly.

Pd, Ni, Cu and Cr coincident in part.

Anomalous values traced to northern extent of licence.



# Ni-Cu-Co Soil Geochem over DTM



# Stratabound PGE

- Examples are: **Bushveld Intrusive Complex** (Merensky Reef and UG2), **Great Dyke** (MSZ) and the **Stillwater** (J-M Reef).
- Regional Geological Criteria: Mineralised intrusions **occur along or near major crustal lineaments** both **within stable cratons** and **along major lithological discontinuities**.
- Intrusions form concordant lopoliths, dipping sheets, funnel like bodies and **fault bounded blocks**.
- Local geological criteria include: prominent layering, cyclic units and **presence of ultramafic – gabbro contacts**.
- Mineralisation features: Generally less than 2m thick with **great lateral continuity in thickness and grade**. The UG2 and Merensky Reef vary from 0.3m – 1.0m thick with grades up to 10 g/t PGE. The MSZ averages 2.5m thick and grades 2-5 g/t PGE + Ni and Cu.
- ***Exploration to date has demonstrated the Dinguiraye Project to fit the model. It has excellent potential to host a new Pt / Ni sulphide district.***



# Project Photos - Dinguiraye



Road Conakry to Dinguiraye



Local residents - Dinguiraye





Dolerite-Gabbro plateau in background



Town of Dinguiraye from Dolerite-Gabbro plateau



Laterite covered plateau



Hotel Amitie in Dinguiraye



# Key Points

- Dinguiraye Project located in **Guinea, a country with an established mining culture.**
- **Good road network in place** and in use by other mines in district. Accelerates exploration and reduces costs.
- Project lies in a **structural and geological setting shared by globally recognized PGM deposits.**
- **Extensive soil geochemical anomalies** point to laterally extensive mineralisation. Highly anomalous Cr points to rocks of ultramafic affinity.
- Dolerite-gabbro is intrusive between Achean basement and overlying Siguiiri basin sediments and volcanics, a **potential sulphur source.**
- **PGM mineralisation at Mt Kakoulima on same crustal scale extensional structure.**
- **Drilling October 2009**

